

Working Instruction, Mechanical

Applicable for Z750

CONTENTS

1	Introduction	3
1.1	View of Z750	3
1.2	Tools and Equipment	3
1.3	General Cautions	4
1.4	Adhesives	4
1.5	Using Hand and ESD Protection	4
1.6	Protection of Displays, Lenses, and Windows	5
1.7	Acceptable Pry Tools	5
2	Disassembly	6
2.1	Overview	6
2.1.1	Battery Cover Removal	7
2.1.2	Battery Removal	7
2.1.3	Lower Half Screws Removal	8
2.1.4	Lower Rear Cover Removal	9
2.1.5	Hinge Cover Removal	10
2.1.6	Lower Circuit Board Removal	11
2.1.7	Side Key Assembly Removal	12
2.1.8	Keypad Light Shield Removal	12
2.1.9	Upper Inner Screw Cover Removal	13
2.1.10	Lower Inner Screw Cover Removal	13
2.1.11	Inner Screw Removal	14
2.1.12	Upper Rear Cover Removal	14
2.1.13	Light Shield Removal	15
2.1.14	Outer Display Connection Cover Removal	15
2.1.15	Outer Display Removal	16
2.1.16	Outer Display Holder Removal	17
2.1.17	Lower Front Cover Assembly Removal	18
2.1.18	PWB/Frame Assembly Removal from Upper Front Cover	18
3	Part Replacement	19
3.1.1	Antenna Replacement	19
3.1.2	Battery Replacement	20
3.1.3	Battery Cover Replacement	20
3.1.4	Camera Replacement	20
3.1.5	Dome Foil Sheet Replacement	23
3.1.6	Flex Replacement	24
3.1.7	GPS Antenna Replacement	27
3.1.8	Hinge Replacement	29
3.1.9	Hinge Cover Replacement	30
3.1.10	Inner Display Replacement	30
3.1.11	Keyboard Replacement	33
3.1.12	Keypad Light Shield Replacement	34
3.1.13	Label Replacement	35

3.1.14	Light Shield Replacement	36
3.1.15	Lower Inner Screw Cover Replacement.....	37
3.1.16	Lower Rear Cover Replacement	37
3.1.17	Memory Stick Cover Replacement.....	38
3.1.18	Outer Display Replacement	38
3.1.19	Rear Speaker Replacement	39
3.1.20	Receiver Replacement	40
3.1.21	Side Key Assembly Replacement	40
3.1.22	SIM FPC Assembly Replacement	41
3.1.23	Speaker Gasket Replacement	43
3.1.24	System Connector/Bluetooth Antenna Replacement	44
3.1.25	Upper Frame Assembly Replacement.....	45
3.1.26	Upper Front Cover Assembly Replacement.....	47
3.1.27	Upper Inner Screw Cover Replacement.....	47
3.1.28	Upper PWB Assembly Replacement.....	48
3.1.29	Upper Rear Cover Replacement	49
3.1.30	Vibrator Replacement.....	50
3.1.31	Video Telephony Camera Replacement (Z750i Only).....	51
4	Reassembly	53
4.1	Overview	53
4.1.1	PWB/Frame Assembly Installation into Upper Front Cover.....	53
4.1.2	Outer Display Holder Installation	54
4.1.3	Outer Display Installation	54
4.1.4	Outer Display Connection Cover Installation.....	55
4.1.5	Light Shield Installation	56
4.1.6	Lower Front Cover Assembly Installation.....	56
4.1.7	Upper Rear Cover Installation	57
4.1.8	Inner Screws Installation	57
4.1.9	Upper Inner Screw Cover Installation.....	58
4.1.10	Lower Inner Screw Cover Installation.....	58
4.1.11	Side Key Assembly Installation	59
4.1.12	Keypad Light Shield Installation	59
4.1.13	Lower Circuit Board Installation.....	60
4.1.14	Hinge Cover Installation	61
4.1.15	Lower rear cover Installation	62
4.1.16	Lower half screws Installation	62
4.1.17	Battery Installation.....	63
4.1.18	Battery Cover Installation	64
5	Country of Origin Barcodes for Brazil/VIVO Labels	64
6	Revision History	64

1 Introduction

1.1 View of Z750



1.2 Tools and Equipment

The following tools and equipment should be available while performing the procedures.

STANDARD TOOLS

- Style 2A Tweezers – Rounded Tip
- Nylon Pointer
- Torque Driver
- Dental Hook
- Plectrum



PRODUCT SPECIFIC TOOLS

- JCIS No. 0 Screw Bit
- T6 screw bit



ESD EQUIPMENT

Protect the phone from ESD damage whenever it has been opened by using:

- ESD-wristband
- ESD-gloves



LABEL EQUIPMENT

The following special equipment is required when replacing or installing a new label:

- Zebra printer connected to computer



1.3 General Cautions

The following cautions are considered to be generic for all products and will not be repeated in the Disassembly, Reassembly, and Replacements sections:

- **SWITCH OFF THE PHONE AND REMOVE ANY MEMORY STICK BEFORE THE START OF THE DISASSEMBLY!**
- **KEEP ALL CONTACT SURFACES CLEAN!**
- **BE CAREFUL WHEN USING TOOLS LIKE THE DENTIST HOOK, TWEEZERS, PRY TOOLS, ETC. TO AVOID SCRATCHES OR DAMAGE TO THE EXTERIOR AND INTERIOR PARTS OF THE PHONE!**
- **BE CAREFUL NOT TO DAMAGE ANY CONTACT SPRINGS!**
- **REMEMBER TO REMOVE THE PROTECTION FILMS ON NEW PARTS SUCH AS THE FRONT COVER AND LCD!**
- **NEVER TOUCH THE DISPLAY GLASS!**

1.4 Adhesives

Use a dentist hook, the tweezers, and/or a nylon pointer to remove old adhesives. Clean the surface with isopropyl alcohol before attaching new adhesives.

1.5 Using Hand and ESD Protection

When handling this product, keep all surfaces clean of dirt, dust, debris, and hand oil. Use appropriate ESD precautions when working on this product. The use of finger cots or gloves, an ESD mat, and an ESD wrist strap are required at minimum.



1.6 Protection of Displays, Lenses, and Windows

Any time the screen portion of a display assembly, the windows of a display cover, or a camera lens is unprotected and exposed, add a protective film over the exposed part to reduce the amount of dust, finger prints, debris, and/or damage that the part may obtain.

1.7 Acceptable Pry Tools

Whenever the phrase “pry tool” is used, a nylon pointer, a plectrum, or a front opening tool may be used depending on the user’s preference.

2 Disassembly

2.1 Overview

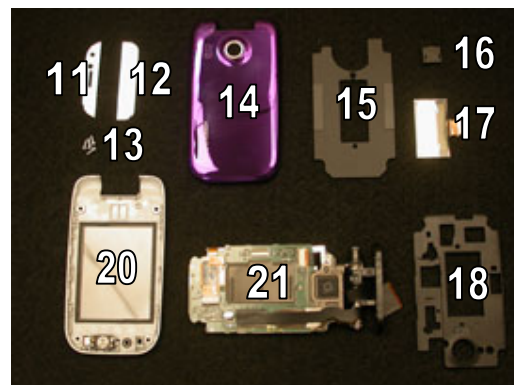
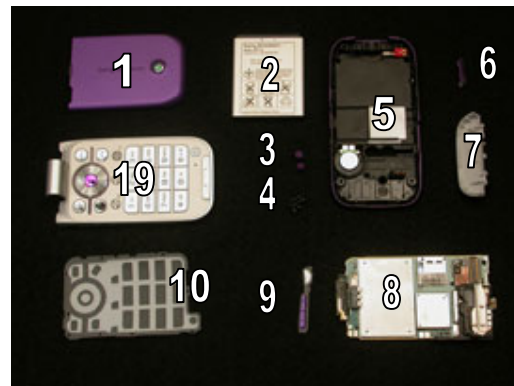
Disassemble in the following order:

Lower half of phone

- Remove battery cover (1)
- Remove battery (2)
- Remove screw caps (3) and lower half screws (4)
- Remove lower rear cover (5) and memory stick cover (6)
- Remove hinge cover (7)
- Remove lower circuit board (8)
- Remove side key assembly (9)
- Remove keypad light shield (10)

Upper half of phone

- Remove upper inner screw cover (11)
- Remove lower inner screw cover (12)
- Remove inner screws (13)
- Remove upper rear cover (14)
- Remove light shield (15)
- Remove outer display connection cover (16)
- Remove outer display (17)
- Remove outer display holder (18)
- Remove lower front cover assembly (19)
- Remove PWB/Frame assembly (21) from upper front cover (20)



2.1.1 Battery Cover Removal

Press down on the raised tab and push cover towards the system connector.

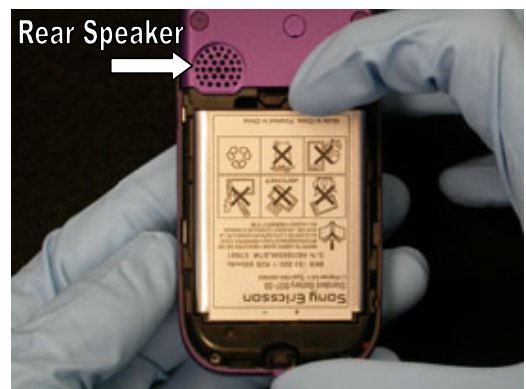


Lift off the cover.



2.1.2 Battery Removal

Lift the end of the battery closest to the rear speaker up from its cavity.



Remove the battery.



2.1.3 Lower Half Screws Removal

Using a dental hook, pry out the two screw caps by pressing the sharp end of the hook into the middle of the cap and prying out.

NOTE: DO NOT REUSE SCREW CAPS



Using a T6 screw bit, remove the four 1.5x5.5 screws.

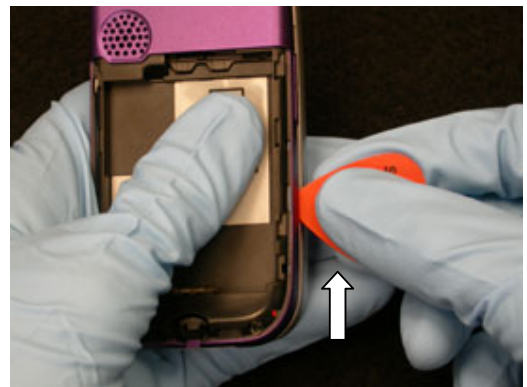


2.1.4 Lower Rear Cover Removal

Insert the plectrum between the two lower halves near the system connector and push the plectrum under the lower rear cover.



Slide the plectrum up along the side of the phone to release the side latch. Stop when you reach the volume key.



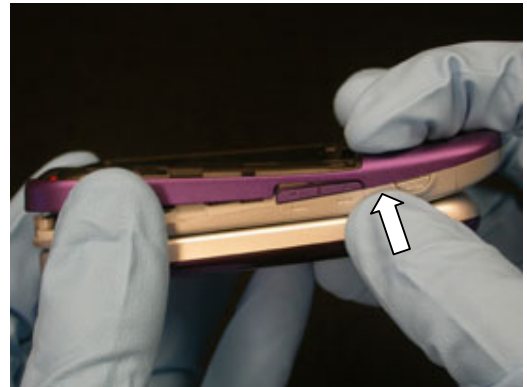
Repeat the previous two steps on the other side of the phone. Stop when you reach the memory stick cover.



Slightly lift the freed end of the lower rear cover and push in on the lower front cover with your finger just above the memory stick cover to release the upper tab on that side of the phone.



With the freed end of the lower rear cover still slightly lifted, push in on the lower front cover with your finger between the volume and play/pause keys to release the upper tab on that side of the phone.



Lifting by the freed end, rotate the lower rear cover off the phone.



Remove the memory stick cover.



2.1.5 Hinge Cover Removal

Rotate the hinge cover away from the lower circuit board to remove the hinge cover.



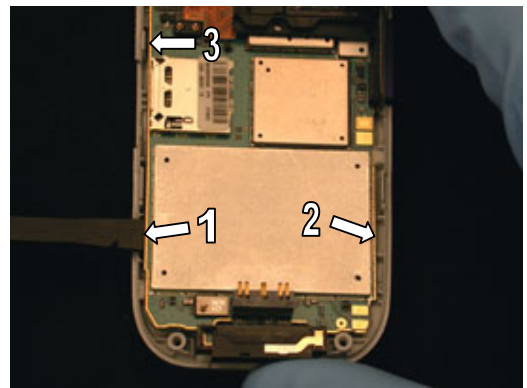
2.1.6 Lower Circuit Board Removal

Using a pry tool, disconnect the hinge flex.

NOTE: DO NOT USE SPEAKER CONNECTOR FOR LEVERAGE



Using a pry tool, pry between the sides of the circuit board and lower front cover assembly as indicated.



Lift the circuit board from the lower front cover assembly.



2.1.7 Side Key Assembly Removal

Remove the side key assembly.



2.1.8 Keypad Light Shield Removal

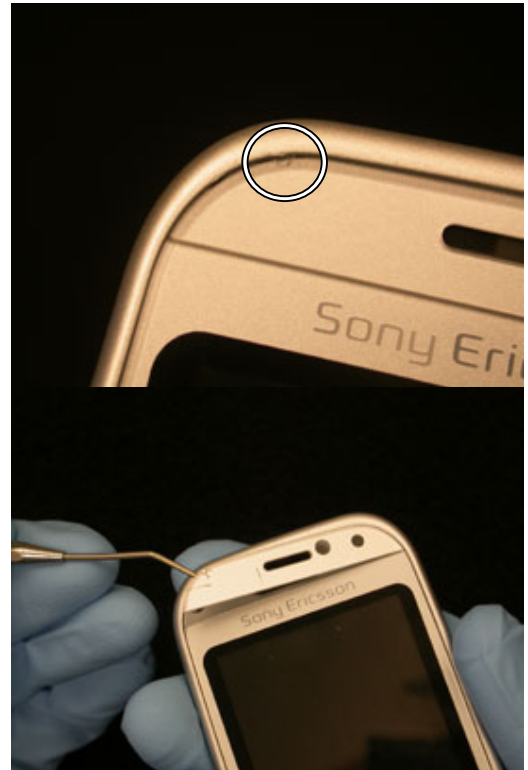
Remove the keypad light shield.



2.1.9 Upper Inner Screw Cover Removal

Using a dental hook, lift up on the upper screw cover at notch indicated and remove it.

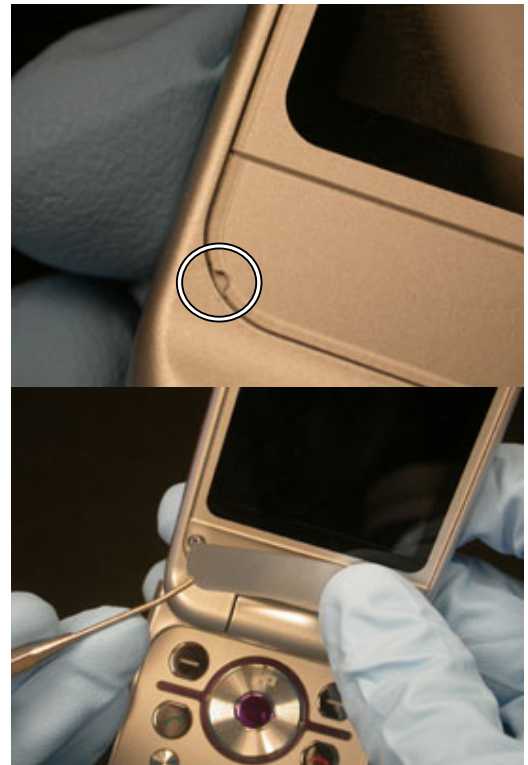
NOTE: DO NOT REUSE SCREW COVERS



2.1.10 Lower Inner Screw Cover Removal

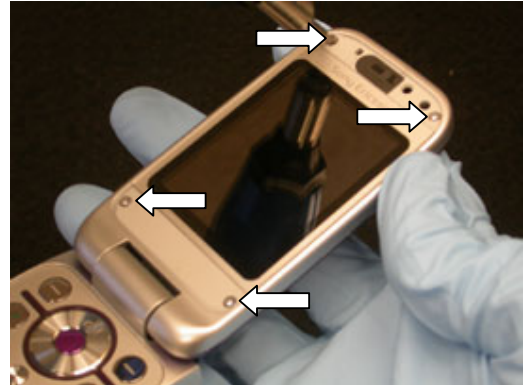
Using a dental hook, lift up on the lower screw cover at notch indicated and remove it.

NOTE: DO NOT REUSE SCREW COVERS



2.1.11 Inner Screw Removal

Using a T6 screw bit, remove the four 1.7x4.5 screws.



2.1.12 Upper Rear Cover Removal

Close the two halves of the phone together.



Insert the plectrum on one side of the phone between the upper front cover assembly and upper rear cover near the hinge.



Slide the plectrum along the seam all around the phone to release the latches.

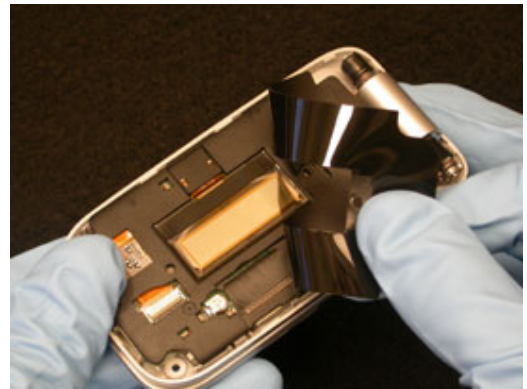


Remove the cover.



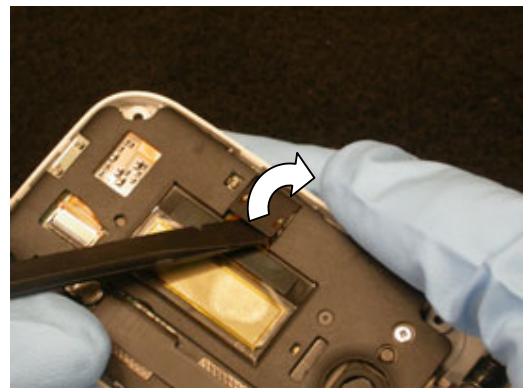
2.1.13 Light Shield Removal

Remove the light shield from the display holder.



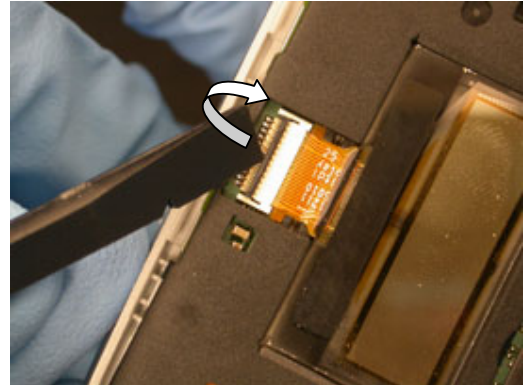
2.1.14 Outer Display Connection Cover Removal

Use a pry tool to remove the outer display connector cover.



2.1.15 Outer Display Removal

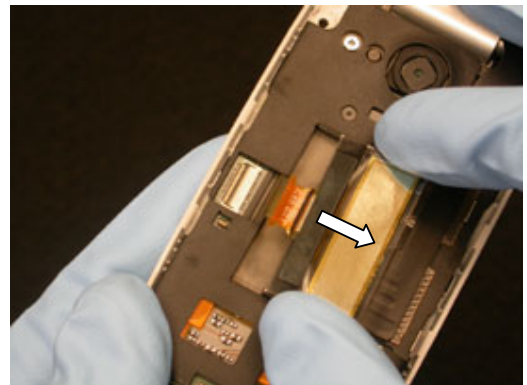
Using a pry tool, rotate the ZIF connector bar up towards the display to release the outer display flex.



Lightly press on one of the black corners of the display to lift the display from its cavity.

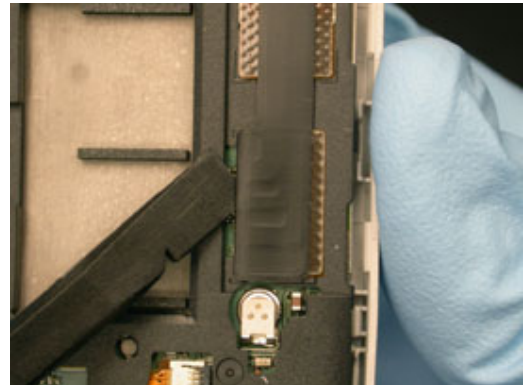


Grip the lifted portion of the outer display and pull it away from its connection to the upper PWB assembly.

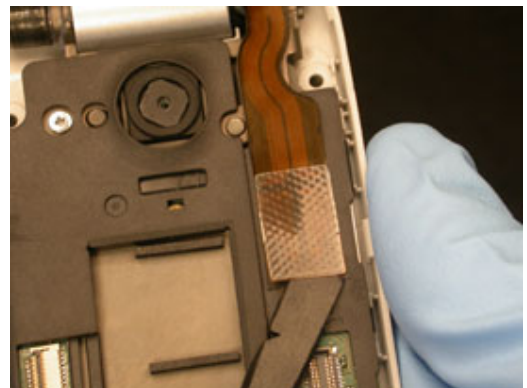


2.1.16 Outer Display Holder Removal

Using a pry tool, disconnect the upper flex connector by lifting on the connector in the location shown.



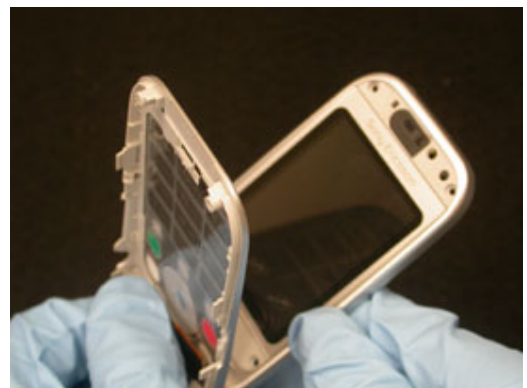
Use the pry tool to disconnect the lower flex connector by lifting on the connector in the location shown.



Remove the outer display holder.



Open the phone halves.



2.1.17 Lower Front Cover Assembly Removal

Lift the lower front cover assembly off of the hinge assembly.



2.1.18 PWB/Frame Assembly Removal from Upper Front Cover

Insert a pry tool between the upper PWB/frame assembly and the upper front cover assembly.



Rotate the pry tool away from the PWB to release the PWB/frame assembly from the upper front cover assembly.



Remove the upper PWB/frame assembly from the upper front cover.



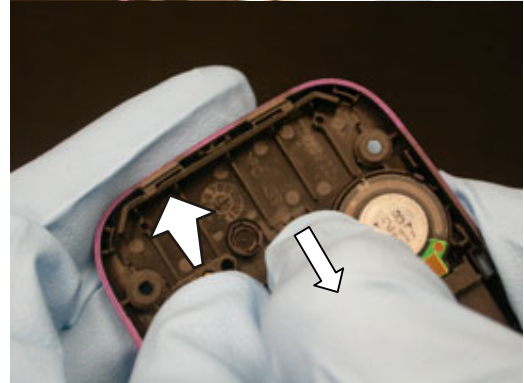
3 Part Replacement

3.1.1 Antenna Replacement

Removal

Complete 2.1.1-2.1.4.

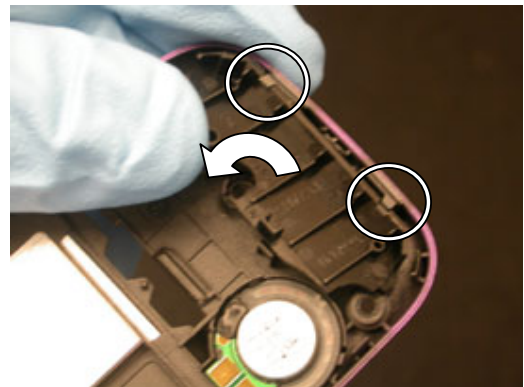
While holding the tab away from the antenna, lift up on the connector pin housing to remove the antenna.



Installation

Obtain a new antenna.

Line the notches in the top of the antenna up with the two tabs on the lower rear cover and rotate the antenna into place.



Complete 4.1.15-4.1.18.

3.1.2 Battery Replacement

Removal

Complete 2.1.1-2.1.2.

Installation

Complete 4.1.17-4.1.18.

3.1.3 Battery Cover Replacement

Removal

Complete 2.1.1.

Installation

Complete 4.1.18.

3.1.4 Camera Replacement

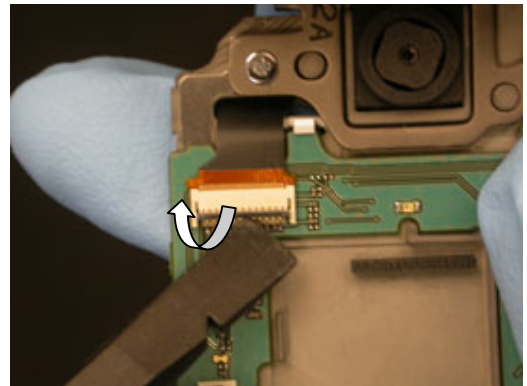
Removal

Complete 2.1.1-2.1.2.

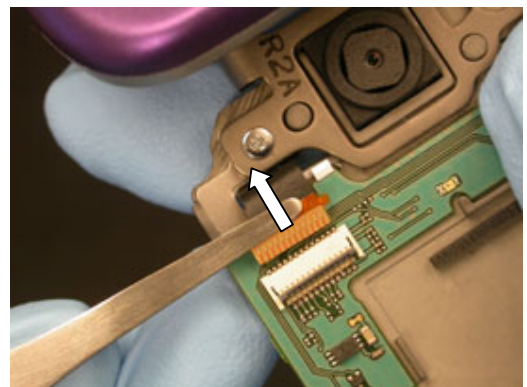
Complete 2.1.9-2.1.16.

Complete 2.1.18.

Use a pry tool to rotate the ZIF connector bar up towards the camera flex.



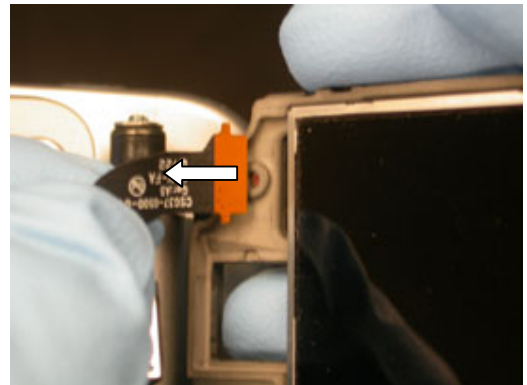
Using Style 2A tweezers, carefully pull the camera flex out of the ZIF connector.



Push the camera out of its cavity in the upper frame.



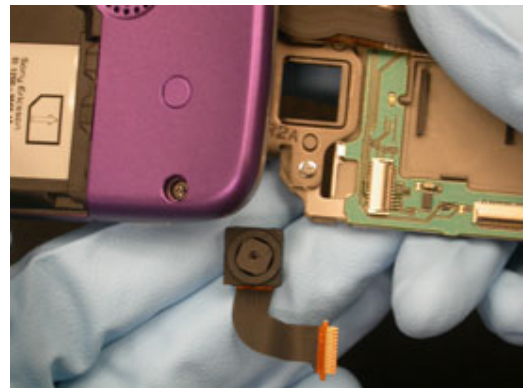
Pull the camera's flex out of the opening in the upper frame through which the camera's flex passes.



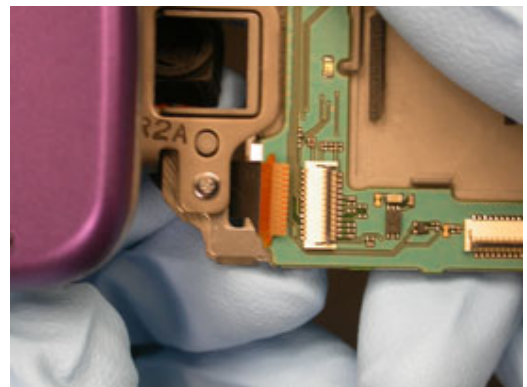
Installation

Obtain a new camera assembly.

Orient the camera assembly and upper PWB/Frame assembly as shown.



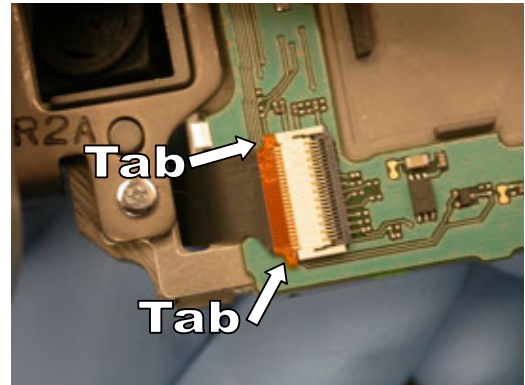
Push the camera flex through the housing.



NOTE: MAKE SURE THE ZIF CONNECTOR BAR IS IN THE UNLOCKED UP POSITION BEFORE TRYING TO INSERT THE FLEX.

Carefully slide the camera flex into the ZIF connector until the tab portion of the flex film is against the connector.

Will holding the flex in place, rotate the connector bar down and away from the flex to lock the connection.



Insert the camera into its opening in the upper PWB/frame assembly.



Complete 4.1.1-4.1.5.

Complete 4.1.7-4.1.10.

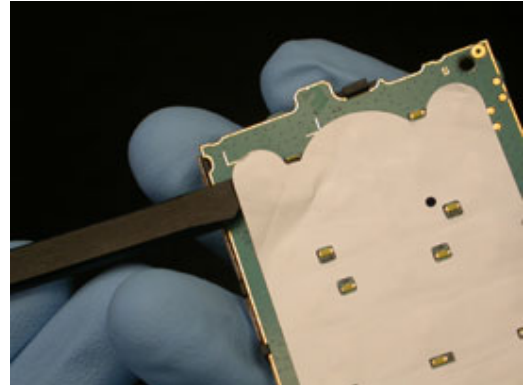
Complete 4.1.17-4.1.18.

3.1.5 Dome Foil Sheet Replacement

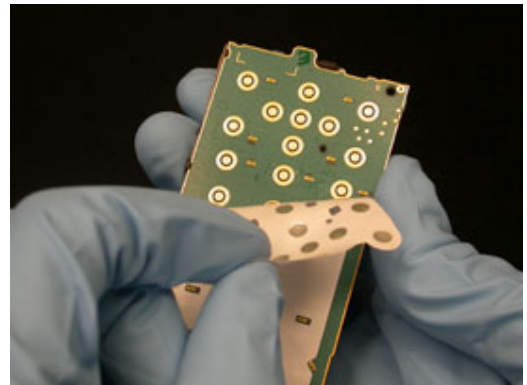
Removal

Complete 2.1.1-2.1.6

Using a pry tool, start peeling the dome foil off of the board.



Using your fingers, peel it the rest of the way off.

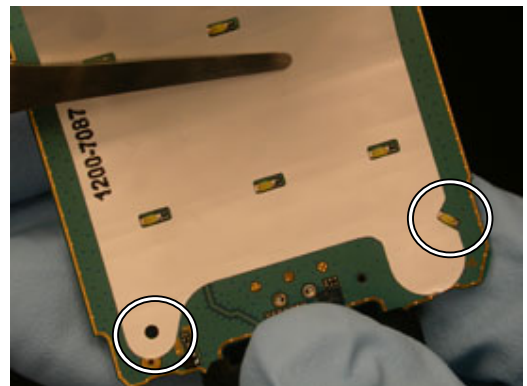


Installation

Clean the board off with alcohol.

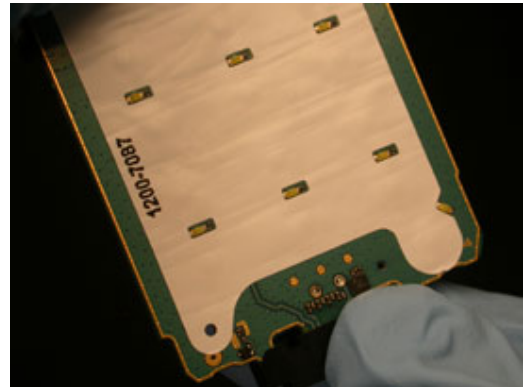
Obtain a new dome foil sheet

Align the lower alignment hole on the foil with the hole on the board and align the notch on the foil with the lowest LED on the circuit board as shown.

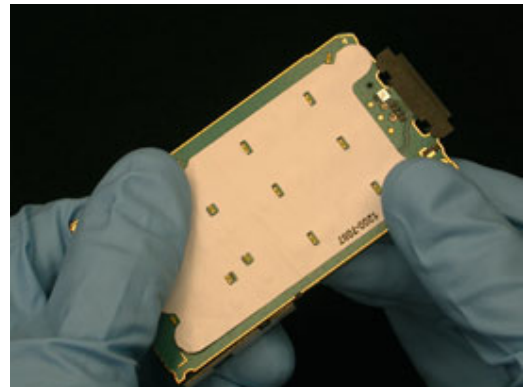


Slowly roll the dome foil down onto the circuit board.

NOTE: AS YOU ROLL THE DOME FOIL DOWN ONTO THE CIRCUIT BOARD, MAKE SURE EACH ROW OF LEDS LINES UP WITH THE CORRESPONDING HOLES IN THE FOIL.



Gently rib over the surface of the dome foil so it forms a good bond with the circuit board.



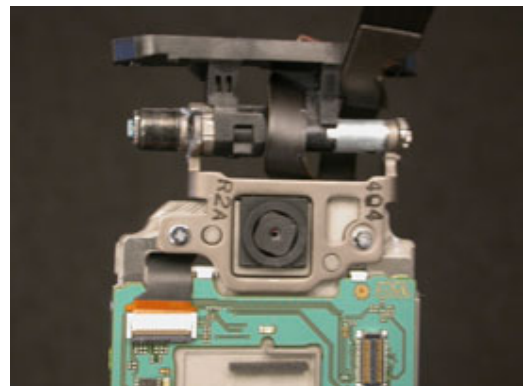
Complete 4.1.13-4.1.18.

3.1.6 Flex Replacement

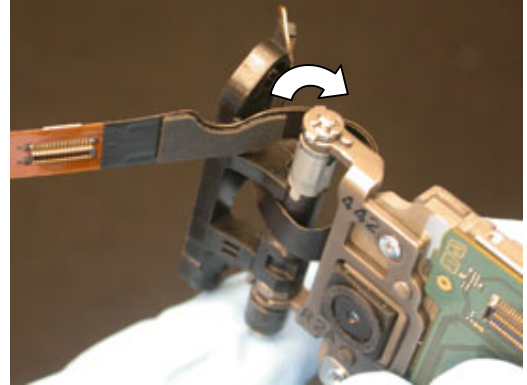
Removal

Complete 2.1.1-2.1.18

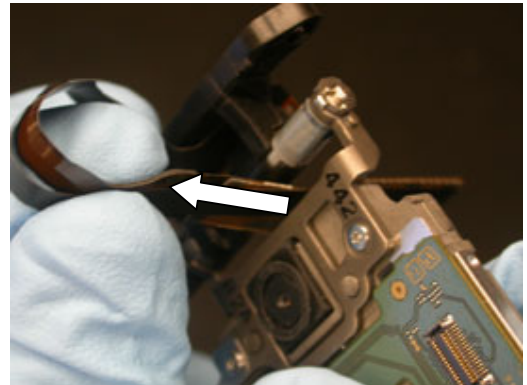
Position the black hinge arm so that it is in line with the PWB/frame assembly as shown.



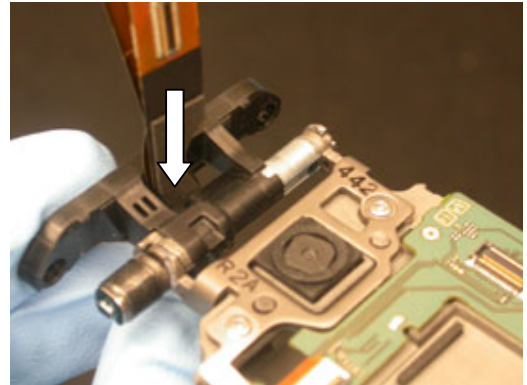
Un-wrap the dual connector end of the flex from the hinge axle.



Pull the dual connector end of the flex out from opening between the hinge axle and the upper PWB frame.



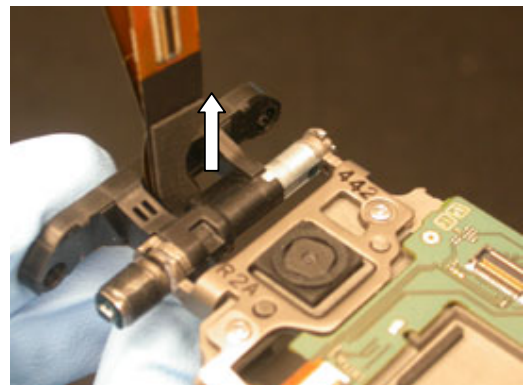
Pull the dual connector end of the flex out from opening between the hinge axle and black hinge arm.



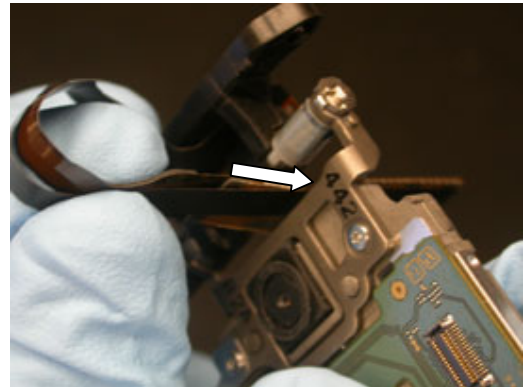
Installation

Push the dual connector end of the flex through the opening between the hinge axle and black hinge arm.

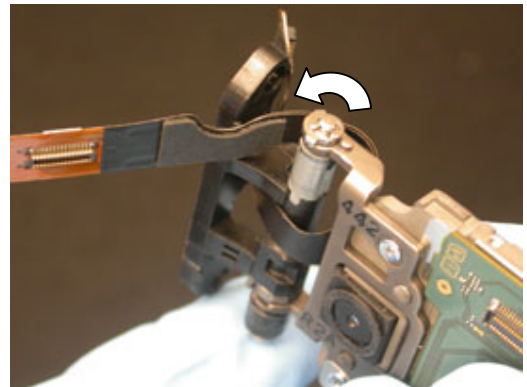
NOTE: THE TWO PWB CONNECTIONS ON THE HINGE FLEX SHOULD BE ORIENTED TOWARDS THE PBW WHEN INSERTING THE FLEX IN THE HINGE.



Push the dual connector end of the flex through the opening between the hinge axle and the upper PWB frame.



Wrap the dual connector end of the flex back over the hinge axle.



Complete 4.1.1-4.1.18.

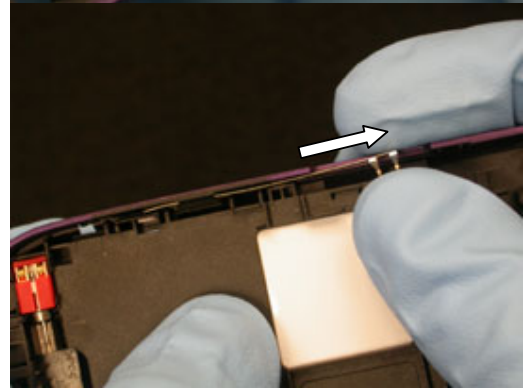
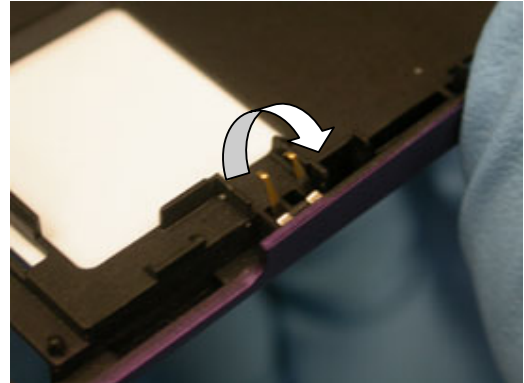
3.1.7 GPS Antenna Replacement

Removal

Complete 2.1.1-2.1.4.

Push the GPS antenna contact fingers towards the side of the lower rear cover to free that end of the antenna from its positioning features.

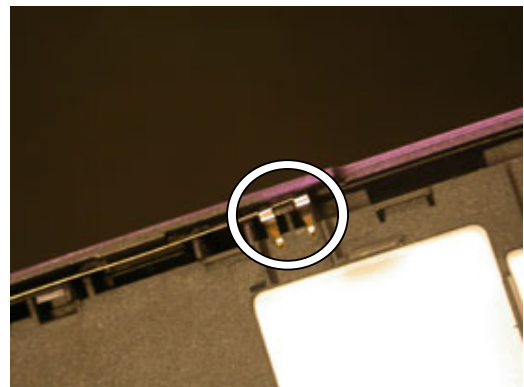
With the contact finger end of the GPS antenna displaced, slide the antenna towards the side key notch to free it from the cover.



Installation

Obtain a new GPS antenna and place it over the slot in the lower rear cover in which the antenna inserts.

NOTE: MAKE SURE THE GPS ANTENNA'S CONTACT FINGERS ARE LINED UP WITH THE CORRESPONDING SUPPORT FEATURES IN THE LOWER REAR COVER AS SHOWN.



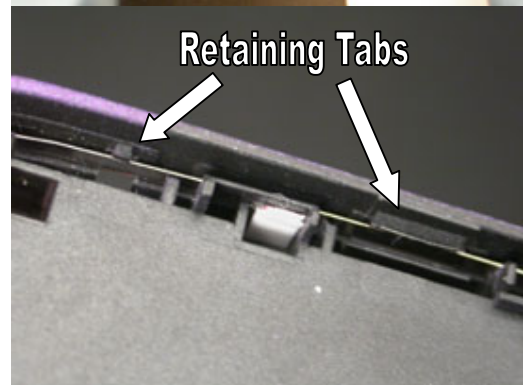
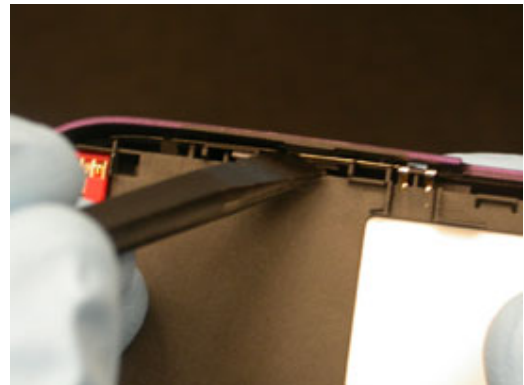
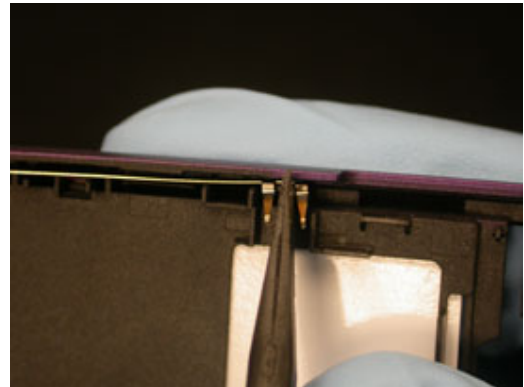
Press the end of the GPS antenna that contains the contact fingers into the slot in the lower rear cover.

NOTE: DO NOT PRESS DIRECTLY ON THE GPS ANTENNA'S CONTACT FINGERS. PRESS BETWEEN THE GPS ANTENNA'S TWO CONTACT FINGERS TO AVOID BENDING THE CONTACTS.

Using a pry tool, push the rest of the antenna under into its slot in the lower rear cover.

NOTE: MAKE SURE THE ANTENNA SNAPS UNDER ITS TWO RETAINING TABS.

Complete 4.1.15-4.1.18.



3.1.8 Hinge Replacement

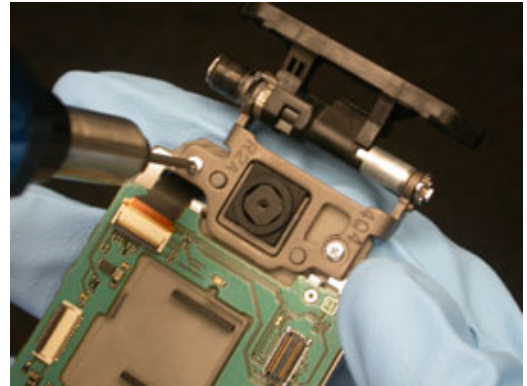
Removal

Complete 2.1.1-2.1.18.

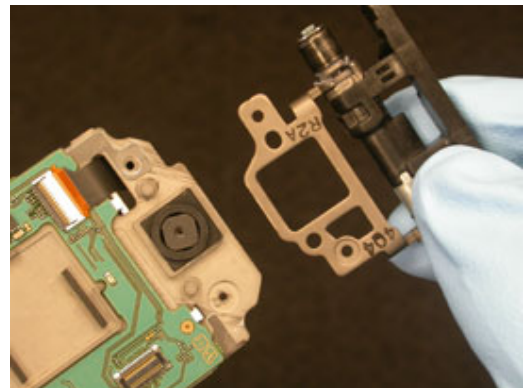
Complete the removal steps of 3.1.6 Flex Replacement.

Using a JCIS 0 screw bit, remove the two 1.7x4 hinge screws.

NOTE: DO NOT REUSE SCREWS

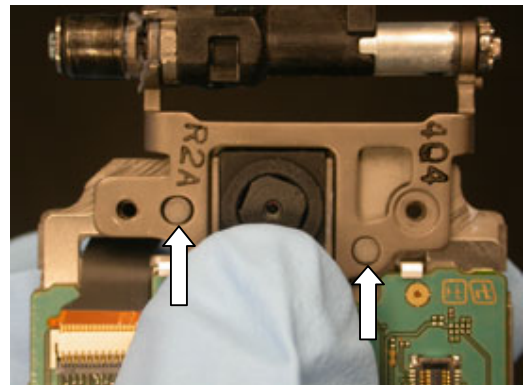


Remove the hinge from the PWB/frame assembly.



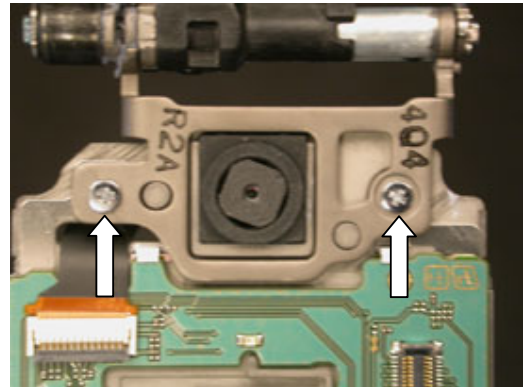
INSTALLATION

Position the metal arm of the hinge/flex assembly onto the upper PWB/frame assembly so that the hinge arm's two alignment holes line up with the corresponding pegs.



NOTE: DO NOT REUSE SCREWS

Using a JCIS 0 bit and a torque setting of 18 N-cm, insert the two (1.7x4) screws.



Complete the installation steps of 3.1.6 Flex replacement.

Complete 4.1.1-4.1.10.

Complete 4.1.17-4.1.18.

3.1.9 Hinge Cover Replacement

Removal

Complete 2.1.1-2.1.5.

Installation

Obtain a new hinge cover.

Complete 4.1.14-4.1.18.

3.1.10 Inner Display Replacement

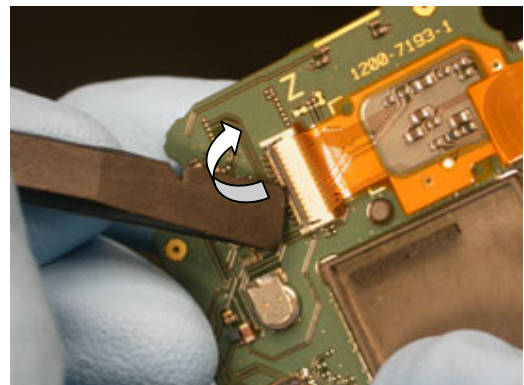
Removal

Complete 2.1.1-2.1.2.

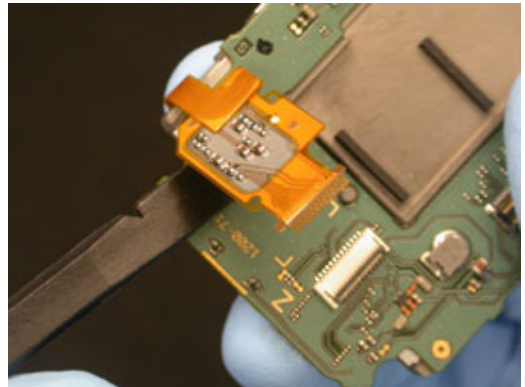
Complete 2.1.9-2.1.16.

Complete 2.1.18.

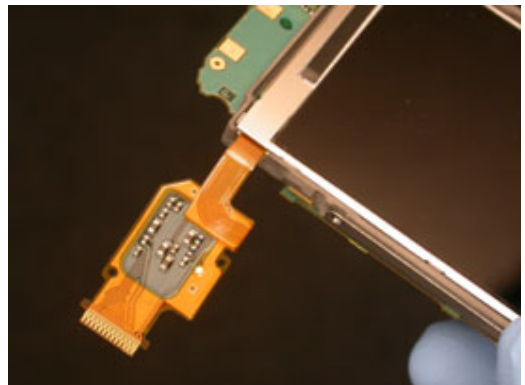
Use a pry tool to rotate the ZIF connector bar up towards the display flex.



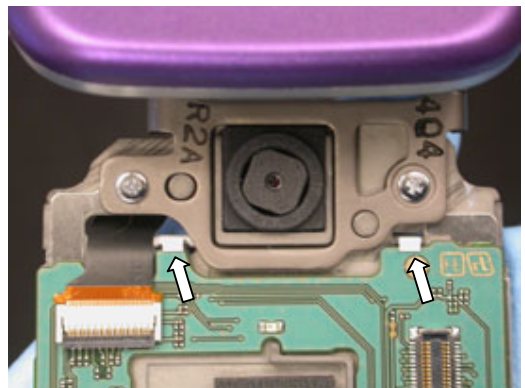
Carefully pull the inner display flex out of the ZIF connector.



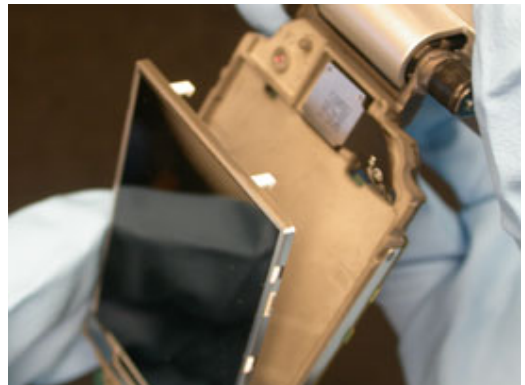
Move the display flex so that it is off to the side of the display as shown.



Unlatch the white display tabs from the edge of the printed wire board (PWB).



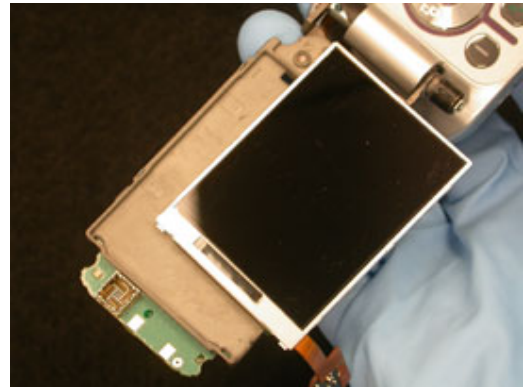
Lift the display up by the tabbed end and remove it from the upper frame.



Installation

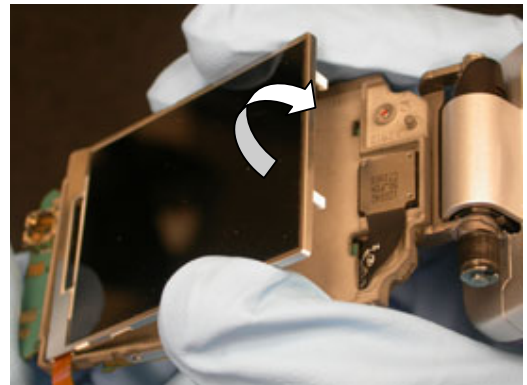
Obtain a new inner display.

Orient the inner display assembly to the upper PWB/frame assembly as shown.

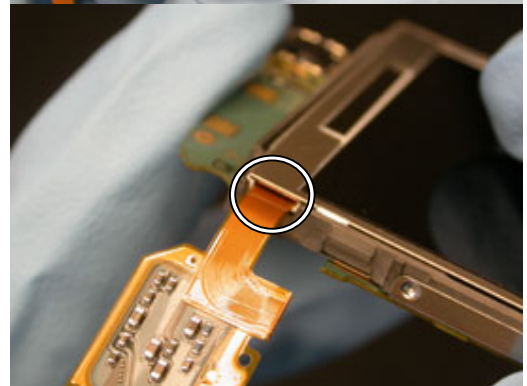


Insert the bottom end of the inner display into the end of the upper PWB/frame assembly's large cavity that is closest to the video telephony camera.

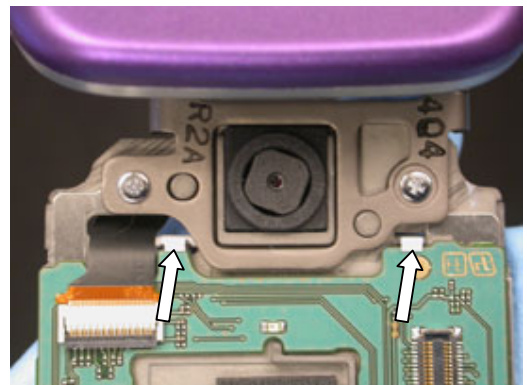
Rotate the inner display into its cavity in the upper PWB/frame assembly.



NOTE: THE INNER DISPLAY'S FLEX SHOULD SIT IN A NOTCH IN THE SIDE WALL OF THE DISPLAY CAVITY



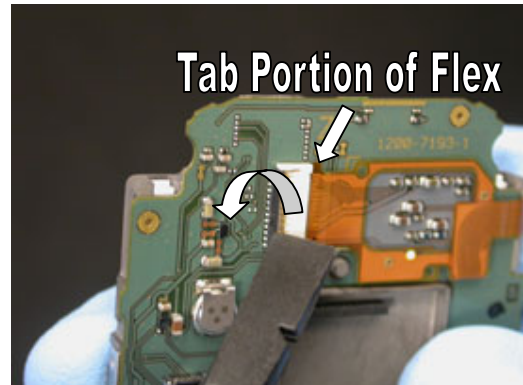
Snap the two tabs at the top end of the inner display into place on the upper PWB/frame assembly.



NOTE: MAKE SURE THE ZIF CONNECTOR BAR IS IN THE UNLOCKED UP POSITION BEFORE TRYING TO INSERT THE FLEX.

Carefully slide the display flex into the ZIF connector until the tab portion of the flex film is against the connector.

Will holding the flex in place, rotate the connector bar down and away from the flex to lock the connection.



Complete 4.1.1-4.1.5

Complete 4.1.7-4.1.10

Complete 4.1.17-4.1.18.

3.1.11 Keyboard Replacement

Removal

Complete 2.1.1-2.1.8

Open the phone hinge.



Push the keyboard from behind to un-stick it from the lower front cover assembly.



Peel the keyboard off of the lower front cover assembly.

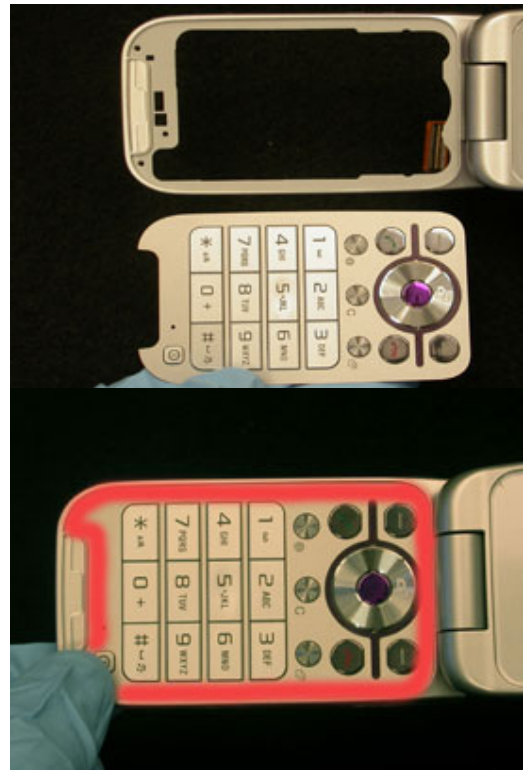


INSTALLATION

NOTE: DO NOT REUSE THE KEYBOARD

Obtain a new keyboard and place it in the corresponding recessed area on the lower front cover assembly.

Apply pressure around the highlighted edge of the keyboard as shown so good adhesion occurs.



Reassemble by completing 4.1.11-4.1.18.

3.1.12 Keypad Light Shield Replacement

Removal

Complete 2.1.1-2.1.6.

Complete 2.1.8.

Installation

Obtain a new keypad light shield.

Complete 4.1.12-4.1.18.

3.1.13 Label Replacement

REMOVAL

Remove the battery by completing 2.1.1-2.1.2.

Before removing the old label from a phone, print a new label.

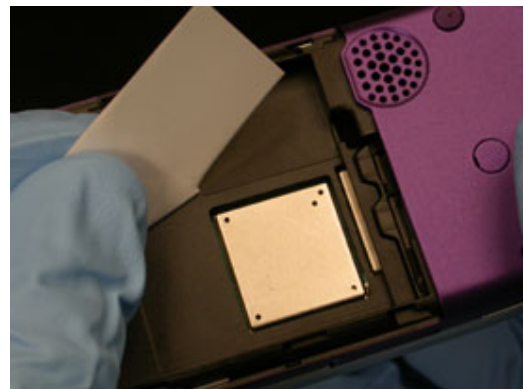
NOTE: THE TEXT ON THE NEW LABEL MUST BE FULLY READABLE AND ALL BARCODES MUST BE SCANNABLE.

Start the peeling off of the label by using the flat end of a nylon pointer to lift the edge of the label shown.

NOTE: THERE IS NO ADHESIVE UNDER THE STARTING LOCATION INDICATED.



Using your fingers, peel the label the rest of the way from the phone.



Installation

Print a new label.

NOTE: IF YOU ARE PRINTING A BRAZIL OR VIVO LABEL, REFER TO SECTION 5 FOR MORE INFORMATION ON THE COUNTRY OF ORIGIN.

Place the label into the recessed area of the cover starting with the bottom left corner.



Smooth the label into place.



Complete 4.1.17-4.1.18.

3.1.14 Light Shield Replacement

Removal

Complete 2.1.1-2.1.2.

Complete 2.1.9-2.1.13.

Installation

Obtain a new light shield

Complete 4.1.5.

Complete 4.1.7-4.1.10.

Complete 4.1.17-4.1.18.

3.1.15 Lower Inner Screw Cover Replacement

Removal

Complete 2.1.10.

Installation

Obtain a new lower inner screw cover.

Complete 4.1.10

3.1.16 Lower Rear Cover Replacement

Removal

Complete 2.1.1-2.1.4.

Complete the removal steps of:

- 3.1.1 Antenna replacement
- 3.1.7 GPS antenna replacement
- 3.1.19 Rear Speaker replacement
- 3.1.23 Speaker gasket replacement
- 3.1.30 Vibrator replacement

Installation

Obtain a new lower rear cover.

Complete the installation steps of:

- 3.1.1 Antenna replacement
- 3.1.7 GPS antenna replacement
- 3.1.13 Label replacement
- 3.1.19 Rear Speaker replacement
- 3.1.23 Speaker gasket replacement
- 3.1.30 Vibrator replacement

Complete 4.1.15-4.1.18.



3.1.17 Memory Stick Cover Replacement

Removal

Complete 2.1.1-2.1.4.

Installation

Obtain a new memory stick cover.

Complete 4.1.15-4.1.18.

3.1.18 Outer Display Replacement

Removal

Complete 2.1.1-2.1.2.

Complete 2.1.9-2.1.15.

Installation

Obtain a new outer display.

Complete 4.1.3-4.1.5.

Complete 4.1.7-4.1.10.

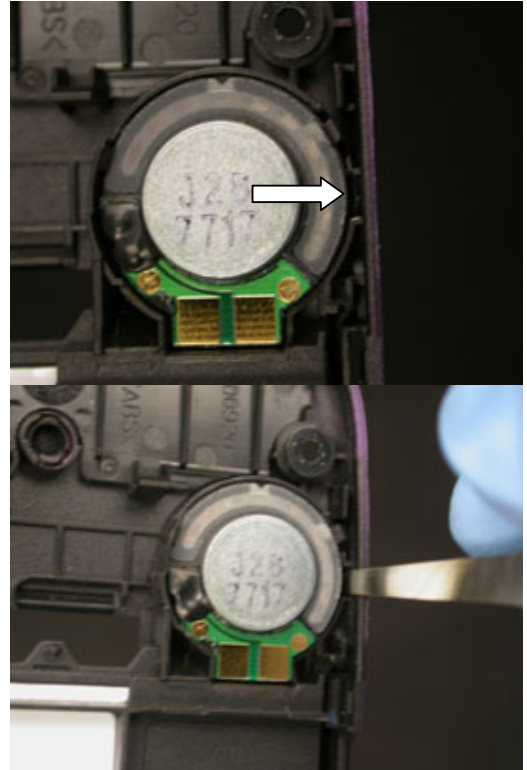
Complete 4.1.17-4.1.18.

3.1.19 Rear Speaker Replacement

Removal

Complete 2.1.1-2.1.4.

Using one side of a pair of blunt tipped tweezers, pry the rear speaker out from its right side using the notch as shown.



Installation

Obtain a new rear speaker.

Snap the new rear speaker into its cavity in the lower rear cover.



Complete 4.1.15-4.1.18.

3.1.20 Receiver Replacement

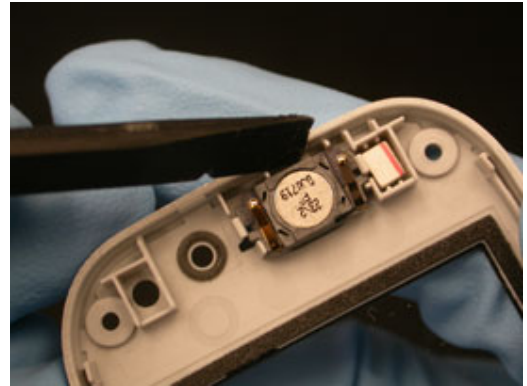
Removal

Complete 2.1.1-2.1.2.

Complete 2.1.9-2.1.16.

Complete 2.1.18.

Using a pry tool, remove the receiver by prying between the receiver and the lip of the upper front cover.



Installation

Obtain a new receiver.

With the gasket-side of the receiver down and the spring fingers pointing away from the display window, place the receiver within the alignment features onto the upper front cover assembly and press it in place with a pry tool.

NOTE: DO NOT PRESS ON THE SPRING FINGERS



Complete 4.1.1-4.1.5.

Complete 4.1.7-4.1.10.

Complete 4.1.17-4.1.18.

3.1.21 Side Key Assembly Replacement

Removal

Complete 2.1.1-2.1.7.

Installation

Obtain a new side key assembly.

Complete 4.1.11.

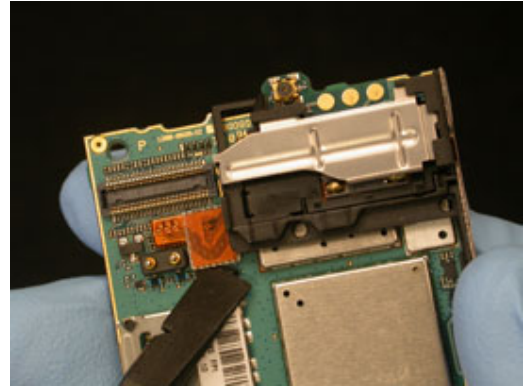
Complete 4.1.13-4.1.18

3.1.22 SIM FPC Assembly Replacement

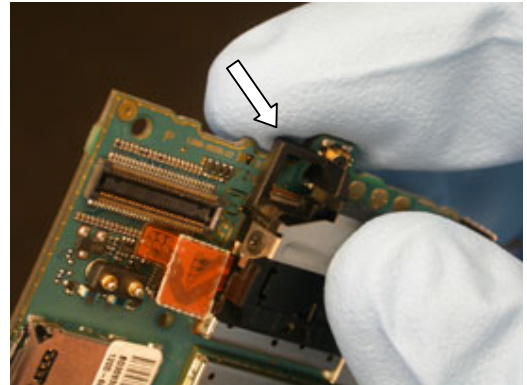
Removal

Complete 2.1.1-2.1.6

Using a pry tool, unplug the SIM FPC assembly flex from the pc board.



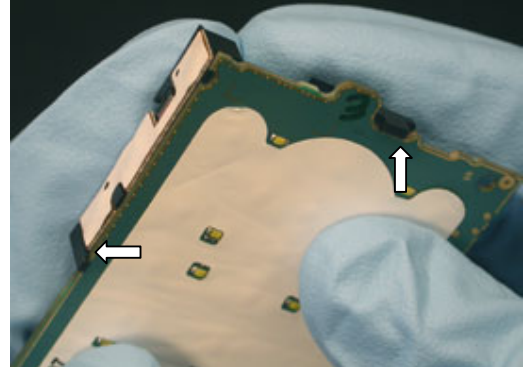
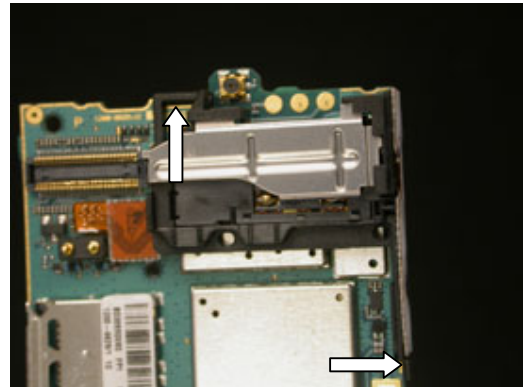
Unlatch the SIM FPC assembly's upper tab from the edge of the circuit board and lift the assembly from the board.



Installation

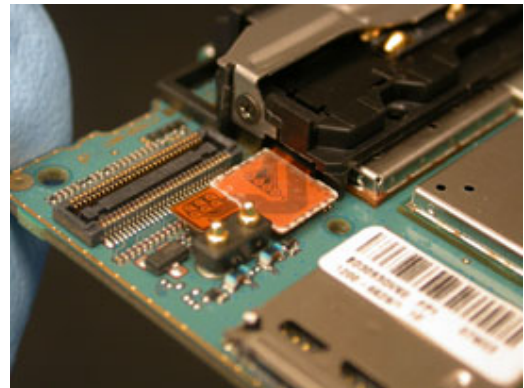
Obtain a new SIM FPC assembly

Snap both the upper and right side tabs are over the edge of the circuit board.



Plug the SIM FPC assembly flex connection into corresponding connector on the circuit board.

NOTE: VERIFY A GOOD CONNECTION IS MADE BY ENSURING THE TOP OF THE FLEX IS FLAT



Complete 4.1.13-4.1.18.

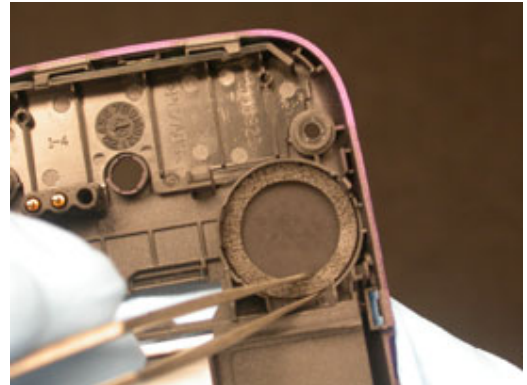
3.1.23 Speaker Gasket Replacement

Removal

Complete 2.1.1-2.1.4.

Complete the removal steps of 3.1.19 Rear Speaker Replacement.

Using style 2A tweezers, remove the speaker gasket.



Installation

Obtain a new speaker gasket and lay it into position as shown.

NOTE: THE SPEAKER GASKET SHOULD BE ORIENTED SO THAT THE GASKET RING IS AWAY FROM THE LOWER REAR COVER.



Complete the installation steps of 3.1.19 Rear Speaker Replacement.

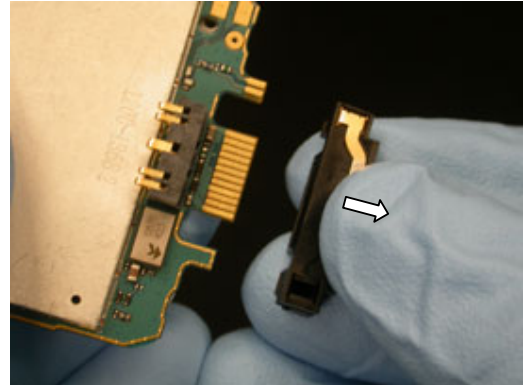
Complete 4.1.15-4.1.18.

3.1.24 System Connector/Bluetooth Antenna Replacement

Removal

Complete 2.1.1-2.1.6.

Pull the system connector off of the pc board.

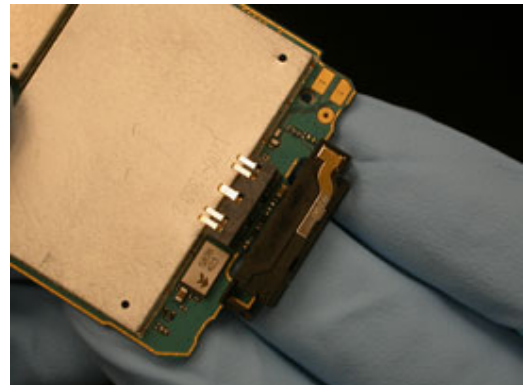


Installation

Obtain a new system connector.

With the PC board oriented so that the battery connector is visible, orient the system connector so that the Bluetooth antenna is visible.

Slide the system connector onto the edge of the pc board.



Complete 4.1.13-4.1.18.

3.1.25 Upper Frame Assembly Replacement

Removal

Complete 2.1.1-2.1.2.

Complete 2.1.9-2.1.16.

Complete 2.1.18.

Complete the removal steps of:

3.1.4 Camera replacement

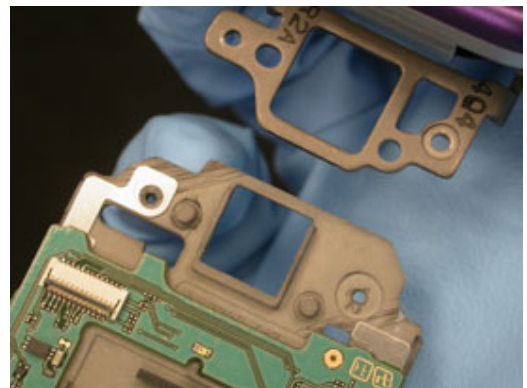
3.1.10 Inner display replacement

Using a JCIS 0 screw bit, remove the two 1.7x4 hinge screws.

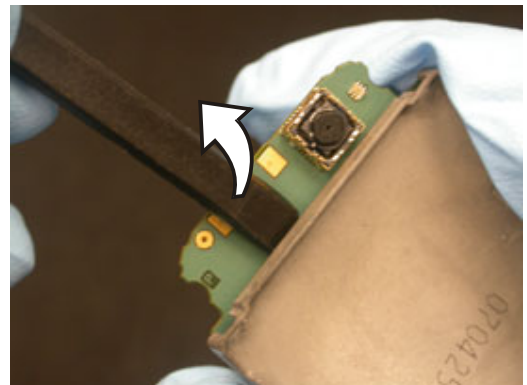
NOTE: DO NOT REUSE SCREWS



Remove the upper frame from the phone.



Using a pry tool, pry the PWB Assembly off of its frame as shown.

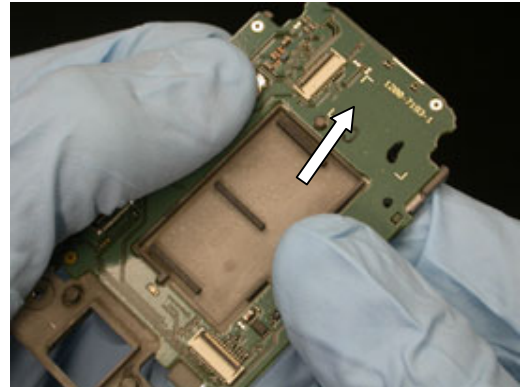


Installation

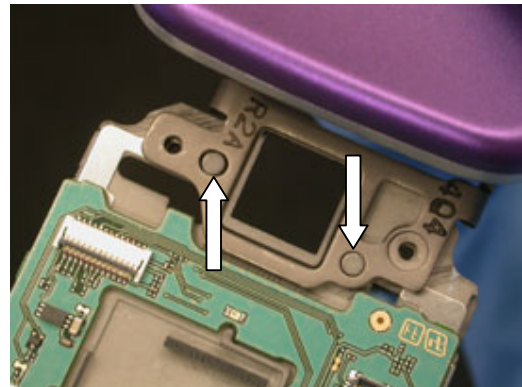
Obtain a new upper frame.

Stick the upper PWB assembly onto the new frame as shown.

Apply pressure in the location indicated so a good bond between the frame and PWB assembly forms.



Position the hinge over the upper frame as shown with the alignment pegs passing through the holes in the hinge.



NOTE: DO NOT REUSE SCREWS

Using a JCIS 0 bit and a torque setting of 18 N-cm, insert the two (1.7x4) screws.



Complete the installation steps of:

3.1.4 Camera replacement

3.1.10 Inner display replacement

Complete 4.1.1-4.1.5.

Complete 4.1.7-4.1.10.

Complete 4.1.17-4.1.18.



3.1.26 Upper Front Cover Assembly Replacement

Removal

Complete 2.1.1-2.1.2.

Complete 2.1.9-2.1.16.

Complete 2.1.18.

Complete the removal steps of 3.1.20 Receiver Replacement.

Installation

Obtain a new upper front cover assembly.

Complete the installation steps of 3.1.20 Receiver Replacement.

Complete 4.1.1-4.1.5.

Complete 4.1.7-4.1.10.

Complete 4.1.17-4.1.18.

3.1.27 Upper Inner Screw Cover Replacement

Removal

Complete 2.1.9.

Installation

Obtain a new upper inner screw cover.

Complete 4.1.9.

3.1.28 Upper PWB Assembly Replacement

Removal

Complete 2.1.1-2.1.2.

Complete 2.1.9-2.1.16.

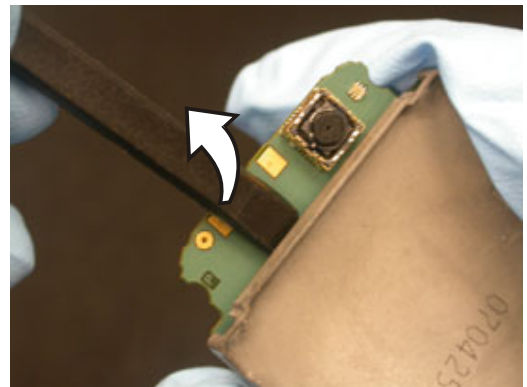
Complete 2.1.18.

Complete the removal steps of:

3.1.4 Camera replacement

3.1.10 Inner display replacement

Using a pry tool, pry the PWB Assembly off of its frame as shown.

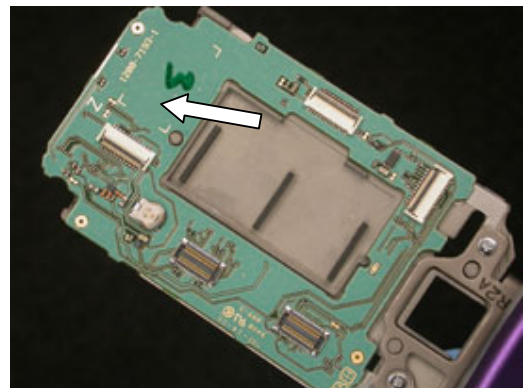


Installation

Obtain a new upper PWB assembly.

Stick the new upper PWB assembly onto the frame as shown.

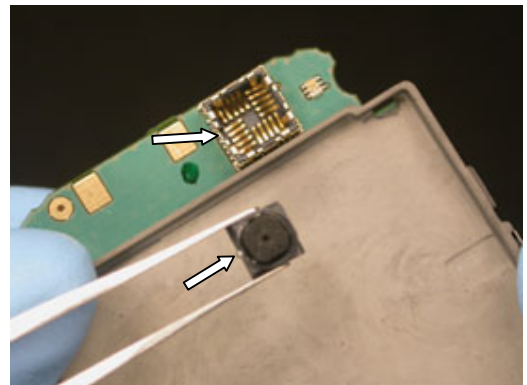
Apply pressure in the location indicated so a good bond between the frame and PWB assembly forms.



NOTE: BEFORE INSTALLING THE VIDEO TELEPHONY CAMERA, ALIGN THE TAB ON THE CAMERA WITH THE NOTCH IN THE WALL OF THE CAMERA SOCKET.

Z750I ONLY - Obtain a new video telephony camera and install it in its socket on the PWB assembly.

NOTE: DO NOT REUSE THE VIDEO TELEPHONY CAMERA.





Complete the installation steps of:

3.1.4 Camera Replacement

3.1.10 Inner Display Replacement

Complete 4.1.1-4.1.5.

Complete 4.1.7-4.1.10.

Complete 4.1.17-4.1.18.

3.1.29 Upper Rear Cover Replacement

Removal

Complete 2.1.9-2.1.12.

Installation

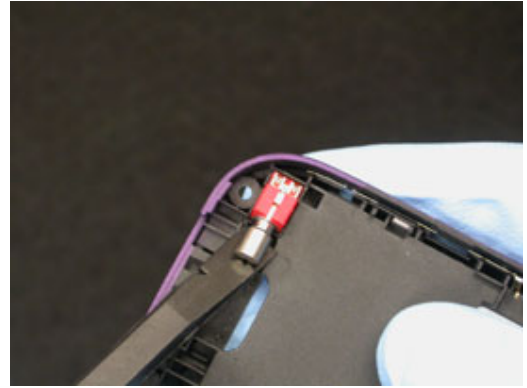
Complete 4.1.7-4.1.10.

3.1.30 Vibrator Replacement

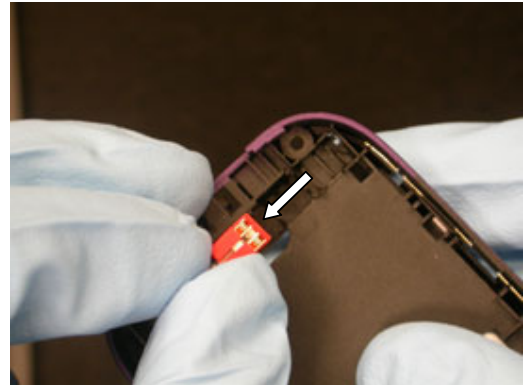
Removal

Complete 2.1.1-2.1.4.

Using a pry tool, lift the weighted end of the vibrator up from its cavity.



Pull the vibrator out of its cavity.



Installation

Obtain a new vibrator and insert it into its cavity in the lower rear cover.

Push the vibrator down into its cavity in the lower rear cover.

NOTE: DO NOT PRESS ON THE VIBRATOR'S CONTACTS



Complete 4.1.15-4.1.18.

3.1.31 Video Telephony Camera Replacement (Z750i Only)

Removal

Complete 2.1.1-2.1.2.

Complete 2.1.9-2.1.16.

Complete 2.1.18.

Complete the removal steps of:

3.1.4 Camera replacement

3.1.10 Inner display replacement

Using a pry tool, pry the PWB Assembly off of its frame as shown.

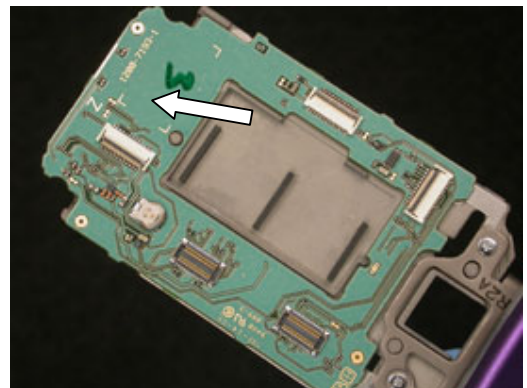


Installation

Obtain a new upper PWB assembly.

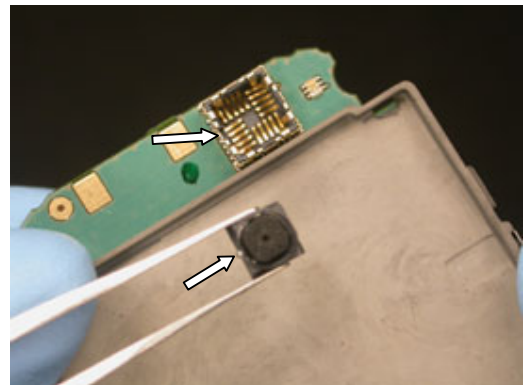
Stick the new upper PWB assembly onto the frame as shown.

Apply pressure in the location indicated so a good bond between the frame and PWB assembly forms.



NOTE: BEFORE INSTALLING THE VIDEO TELEPHONY CAMERA, ALIGN THE TAB ON THE CAMERA WITH THE NOTCH IN THE WALL OF THE CAMERA SOCKET.

Obtain a new video telephony camera and install it in its socket on the PWB assembly.





Complete the installation steps of:

3.1.4 Camera replacement

3.1.10 Inner display replacement

Complete 4.1.1-4.1.5.

Complete 4.1.7-4.1.10.

Complete 4.1.17-4.1.18.

4 Reassembly

4.1 Overview

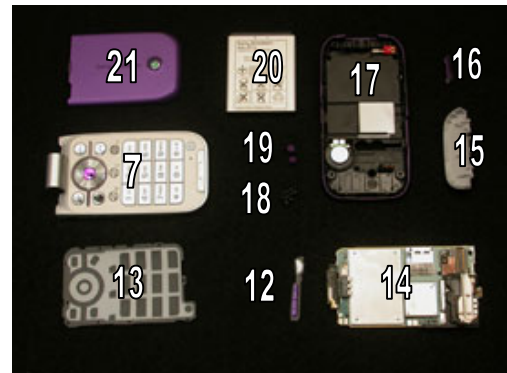
Upper half of phone

- Install PWB/frame assembly (2) into upper front cover(1)
- Install outer display holder (3)
- Install outer display (4)
- Install outer display connection cover (5)
- Install light shield (6)
- Install lower front cover (7)
- Install upper rear cover (8)
- Install inner screws (9)
- Install upper inner screw cover (10)
- Install lower inner screw cover (11)



Lower half of phone

- Install side key assembly (12)
- Install keypad light shield (13)
- Install lower circuit board (14)
- Install hinge cover (15)
- Install memory stick cover (16) and lower rear cover(17)
- Install lower half screws (18) and screw caps (19)
- Install battery (20)
- Install battery cover (21)



4.1.1 PWB/Frame Assembly Installation into Upper Front Cover

Holding the hinge flex so that it is wrapped around the hinge as shown, snap the upper PWB/frame assembly into the upper front cover.



4.1.2 Outer Display Holder Installation

Lay the outer display holder onto the upper PWB assembly as shown.

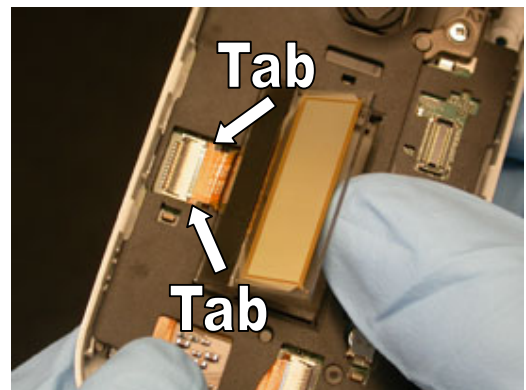


4.1.3 Outer Display Installation

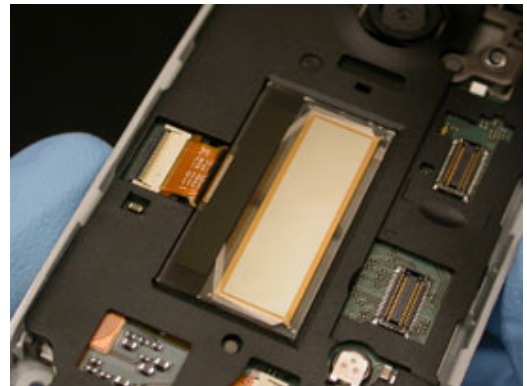
NOTE: MAKE SURE THE ZIF CONNECTOR BAR IS IN THE UNLOCKED UP POSITION BEFORE TRYING TO INSERT THE FLEX.

Carefully slide the display flex into the ZIF connector until the tab portion of the flex film is against the connector.

Lay the outer display into its cavity in the outer display holder.

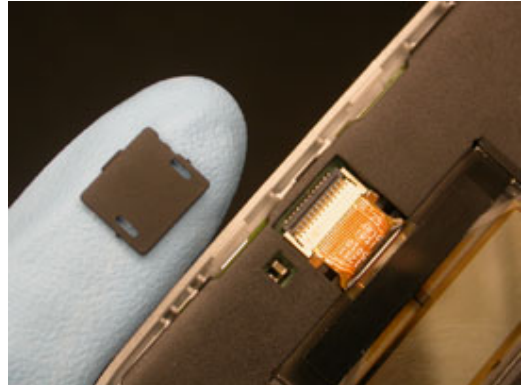


With the outer display positioned as shown, rotate the connector bar down and away from the flex to lock the connection.



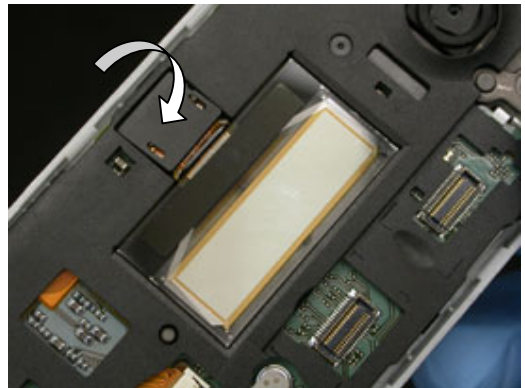
4.1.4 Outer Display Connection Cover Installation

Orient the outer display connection cover as shown.

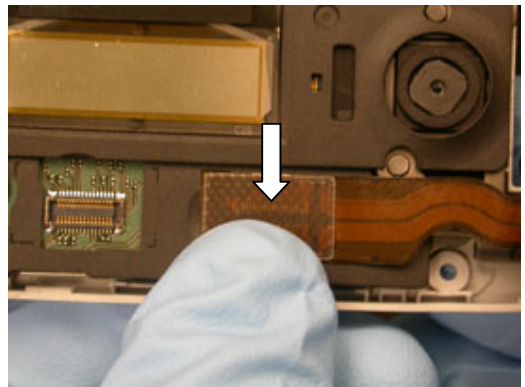


Insert tabbed edge of cover first and rotate cover down into opening.

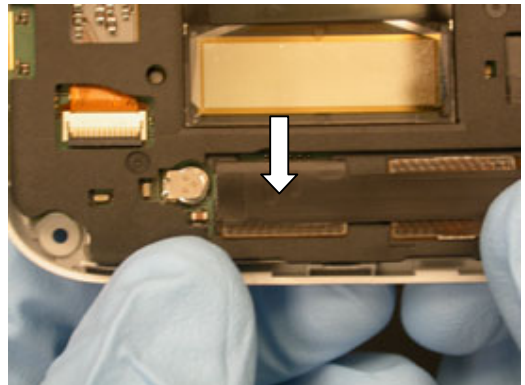
NOTE: COVER SHOULD SNAP INTO PLACE AND BE FLUSH WITH THE SURFACE OF THE DISPLAY HOLDER



Reconnect the lower flex assembly connection.



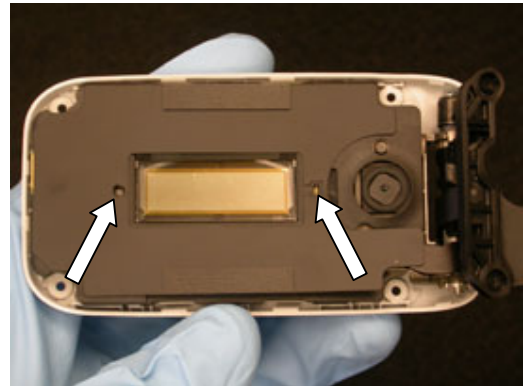
Reconnect the upper flex assembly connection.



4.1.5 Light Shield Installation

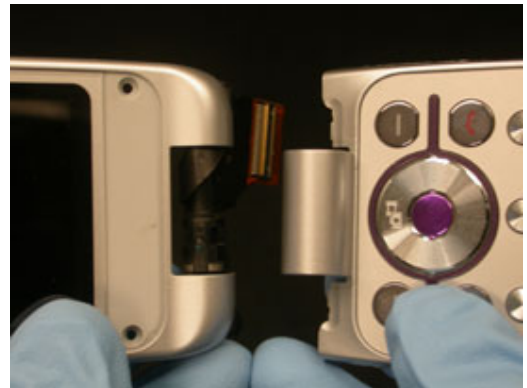
Place the light shield on the outer display holder and use the two features indicated for positioning.

Apply pressure at the two alignment locations so that the light shield adheres to the outer display holder.



4.1.6 Lower Front Cover Assembly Installation

Orient the lower front cover assembly and upper front cover assembly as shown.

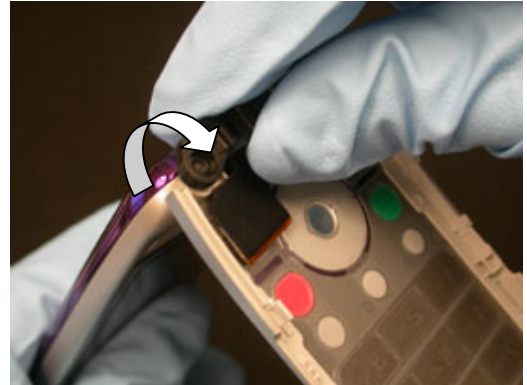


Place the lower front cover over the hinge as shown.

NOTE: THE FLEX MAY NEED TO BE HELD TIGHT TO KEEP IT CLEAR OF THE HINGE COVER PORTION OF THE LOWER FRONT COVER.



Close the phone by rotating from the black hinge bar and not the lower front cover.



4.1.7 Upper Rear Cover Installation

Place the upper rear cover over the upper front cover and snap it in place.



4.1.8 Inner Screws Installation

Open phone.

Using a T6 screw bit and a torque of 23 N-cm, install the 4 (1.7x4.5) screws in the locations indicated.

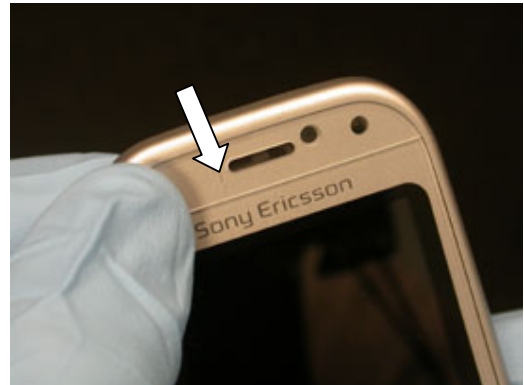


4.1.9 Upper Inner Screw Cover Installation

NOTE: DO NOT REUSE THE UPPER INNER SCREW COVER

Install a new upper inner screw cover.

Apply pressure over the surface of the upper inner screw cover so a good adhesion occurs.



4.1.10 Lower Inner Screw Cover Installation

NOTE: DO NOT REUSE THE LOWER INNER SCREW COVER

Install a new lower inner screw cover.

Apply pressure over the surface of the lower inner screw cover so a good adhesion occurs.

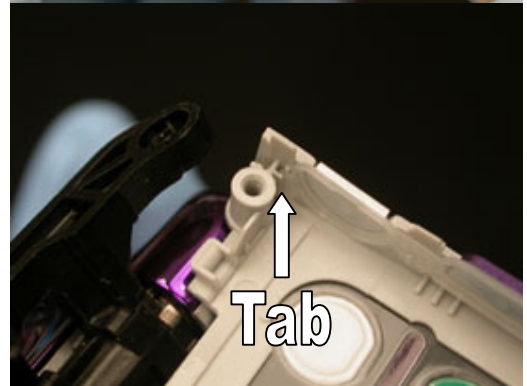
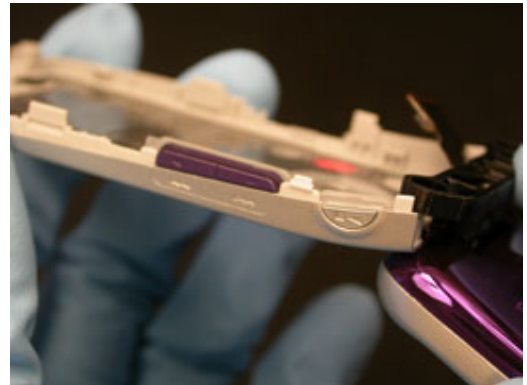


4.1.11 Side Key Assembly Installation

Place the side key assembly in the position shown.

NOTE: MAKE SURE THE TAB AT THE PLAY KEY END OF THE SIDE KEY ASSEMBLY IS WITHIN ITS CORRESPONDING SLOT AND THAT THE TWO HOLES IN THE SIDE KEY ASSEMBLY LINE UP WITH THEIR ALIGNMENT PEGS.

Press the alignment holes down onto the alignment pegs.



4.1.12 Keypad Light Shield Installation

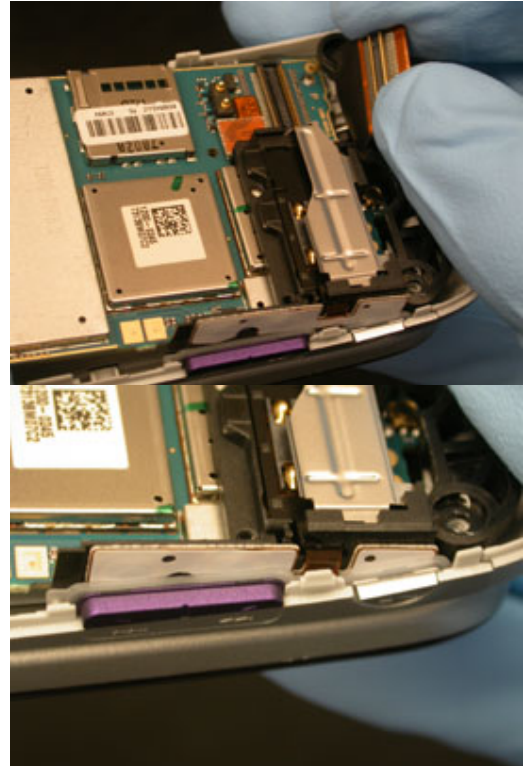
Place the keypad light shield onto the back of the keyboard.



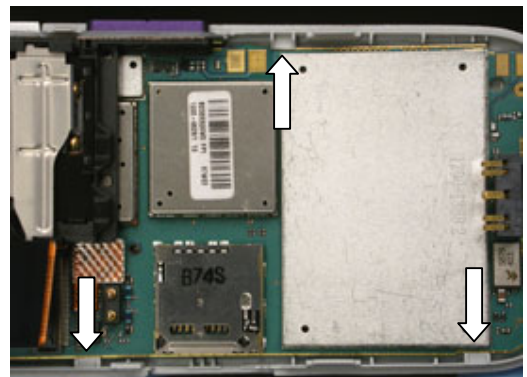
4.1.13 Lower Circuit Board Installation

While holding the end of the hinge flex out of the way, lay the circuit board in the lower front cover assembly as shown.

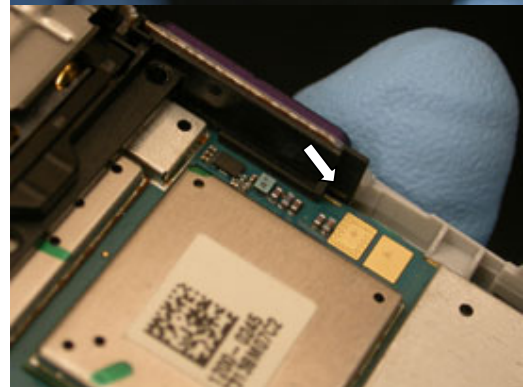
NOTE: MAKE SURE THE SIDE KEY ASSEMBLY IS CORRECTLY POSITIONED AGAINST THE SIM FPC ASSEMBLY.



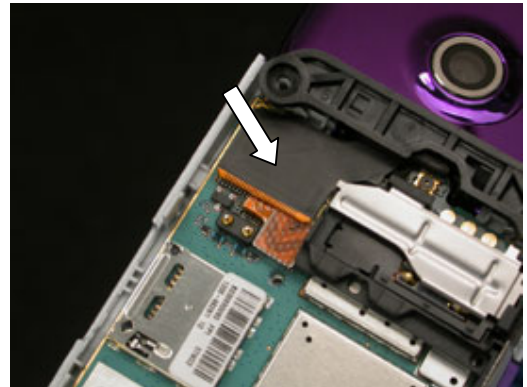
Secure the circuit board in the lower front cover assembly by snapping the circuit board under the three indicated tabs.



NOTE: ENSURE THE SIM FPC ASSEMBLY SIDE TAB STAYS LATCHED



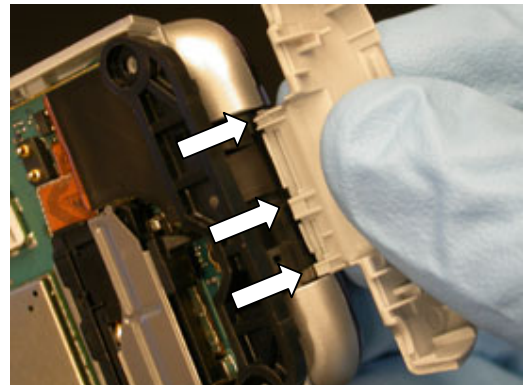
Connect the hinge flex to the circuit board.



4.1.14 Hinge Cover Installation

Close phone.

Insert the three tabs indicated under the hinge cover of the lower front frame.



Rotate the cover in place and snap it together.

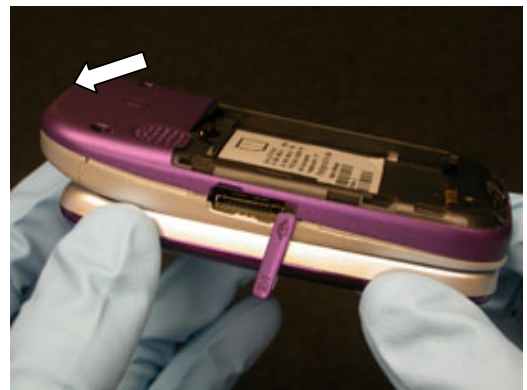


4.1.15 Lower rear cover Installation

Place the tab of the memory stick cover in its slot and let the cover hang down off the frame as shown.



Place the lower rear cover over the back of the phone.
Snap the upper tabs in place first.
Snap the rest of the lower rear cover in place.
Rotate the memory stick cover and snap it into place.



4.1.16 Lower half screws Installation

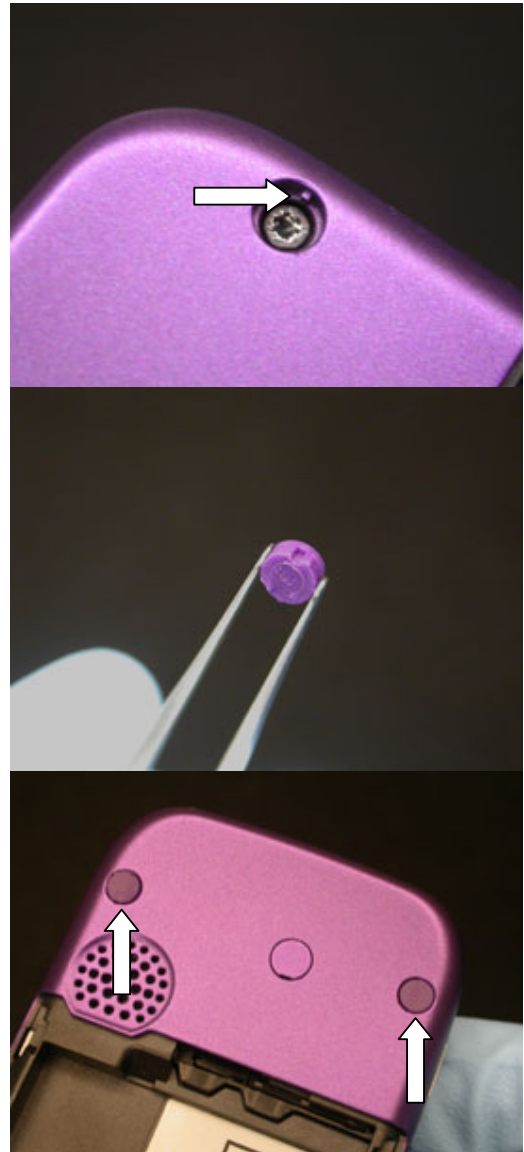
Using a T6 screw bit and a torque of 23N-cm, insert the 4 (1.5x5.5) screws in the locations indicated.



NOTE: DO NOT REUSE SCREW CAPS

NOTE: MAKE SURE TO LINE UP THE NOTCH IN THE SCREW CAP WITH THE TAB IN THE SCREW HOLE BEFORE INSERTING THE SCREW CAP

Install new screw caps in the two locations shown.



4.1.17 Battery Installation

Insert the battery in the battery cavity as shown.



4.1.18 Battery Cover Installation

Lay the battery cover over the lower rear cover's battery area as shown.



Slide the battery cover towards the rear speaker port until it latches in place.



5 Country of Origin Barcodes for Brazil/VIVO Labels

Below is a link to a list of countries of origin. If you are printing a Brazil or VIVO label, scan the barcode corresponding to the correct country of origin for the "Fabricado" field.



6 Revision History

Rev.	Date	Changes / Comments
A	2007-Sept 27	Initial Release
B	2008-July-01	Added brazil/vivo label